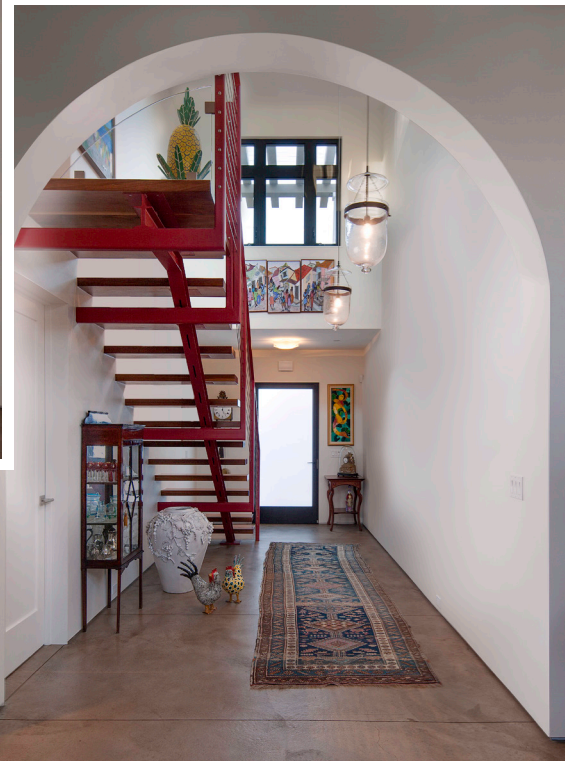


Featured Project

TRANSITIONAL DESIGN
NEW HOME
Contemporary Spanish Two-Story



ALLEN
CONSTRUCTION

BUILDALLEN.COM | LICENSE #503300



"This house was defined by its tiny budget, but its Contemporary style demanded perfect detailing. Allen Construction, as always, resolved this apparently unsolvable conflict with ease."

- Peter Becker, Project Architect

Project Highlights

2,226 SF NEW HOME

The lot was so small, it was once the garden of the house next door. It was so small, in fact, that the city fought to keep it unbuilt. Financed on a retirement income, even the budget was small. To make things even more interesting, the clients wanted a two-story contemporary home in the heart of the City's ultratraditional Mission District...on a street that 's primarily one-story.

The home's footprint was defined by its setbacks and by the minimum open yard allowed, using every trick to make everything seem bigger and grander than it is. What we couldn't do in square footage we did with volume and natural light, most rooms borrowing space from each other and opening onto the tiny gardens.

Design Review stepped in and required Spanish styling due to the site's close proximity to the Mission. So we added some plain-columned trellises, a wooden bay window and arches on an axis that lead from the front door to the back.

The result? It was just Spanish enough.

Partners

ARCHITECT: Peter Becker

PHOTOGRAPHY: Jim Bartsch

