



LIVING AREA

The materials – stone, wood, clay, plaster – were carefully considered in order to chime with the landscape outdoors.

Custom **coffee tables**, Corinne Mathern Studio.

Chairs in a Calvin Fabrics linen, Una Malan. **Flooring**, Exquisite Surfaces

CALIFORNIA DREAMING

Drawing inspiration from modernist pioneers,
this mid-century-style home in Santa Barbara
is the epitome of laid-back luxury

WORDS KARINE MONIÉ PHOTOGRAPHY NICOLE FRANZEN





HALLWAY

The main entry to the house displays views of the breathtaking surroundings.

Custom Douglas fir **console**. Christopher Norman. Chiselled stone **bowl**. Big Daddy's Antiques. Vintage **lamp**. JF Chen

A

fter an 11-year career as a linebacker, Sean Lee retired last year from the NFL team the Dallas Cowboys. He grew up in Pittsburgh, Pennsylvania – as did his wife Megan – but instead of returning to the northeast, where winters are gloomy and cold, the couple chose a sunnier destination: Southern California. For this new phase of their life, Megan and Sean – with dogs Finn and Waylon – jumped at the chance to move into this 3,000-square-foot home built in a mid-century modern-inspired style.

Located in the hills outside of Santa Barbara, the property was renovated and now features an open-concept floor plan. Organised over two levels, with a separate primary suite in addition to two bedrooms and three bathrooms plus a pool and a spa, this house was a labour of love.

‘From acceptance of the offer to move in, it took two years,’ says Corinne Mathern, founder of Corinne Mathern Studio, who took care of the interior. ‘My clients were enthusiastic about moving to Santa Barbara and building a life in a new town.’ While Sean was passionate about the views and the landscaping, Megan mentioned the Aman resort in Kyoto as a reference, which clicked with Corinne who is drawn to calm spaces like in the Aman resorts.

‘The house’s structure was inspiring – I like designing within a series of boxes,’ says Corinne, about the work of Dovetail Architects. Combining wood, clay, stone and plaster, the natural ‘of the earth’ palette perfectly reflects the concept, which was to create a harmonious decor that encourages views of the mountains and the Pacific Ocean in a tranquil atmosphere. ‘The home has an indoor/outdoor flow that we wanted to honour and ensure was seamless,’ says Corinne.

With the introduction of deep-pigmented blues, greens and yellows, the colours, too, reference the



surroundings. ‘We worked with Benjamin Moore’s Victorian Garden to create a den-like media room for movie screenings and football games,’ adds the interior designer. Having a background in fashion, Corinne put a lot of consideration into layering textures throughout, with accessories in linen and wool. In this warm home, a sense of calm prevails, echoing the work of Finnish architect and designer Alvar Aalto, while the open-concept space with floor-to-ceiling doors and windows are reminiscent of German master Mies van der Rohe. The influence of Mexican architect Luis Barragán can also be seen in the simplicity of architectural lines while Irish pioneer of the Modern Movement Eileen Gray’s mid-century touch informed the refined yet inviting interiors. The views, however, were the guiding principles since day one and stuck in both the designer and homeowners’ minds along the way.

Several pieces of furniture that adorn the spaces were created by Corinne Mathern Studio, including the Lurah sofa (for Una Malan) and custom pine block coffee tables in the sitting room, the chiselled stone block fire pit in the courtyard and the side tables in the media room, among others.

‘I wanted to create the Santa Barbara experience for the homeowners,’ says Corinne. ‘People are drawn here for the beautiful year-round sunshine and Megan and Sean bought their dream house to enjoy that. 🌞’

■ corinnemathern.com

DINING SPACE

In every piece you can see the hand of the maker, instilling a crafted beauty.

Artwork, Gala Porras-Kim.

Table, Corinne Mathern

Studio; made by Bananas &

Hammocks. **Chairs,** Stahl +

Band. **Pendant,** Ruemmele.

Candlesticks, Nancy Pearce

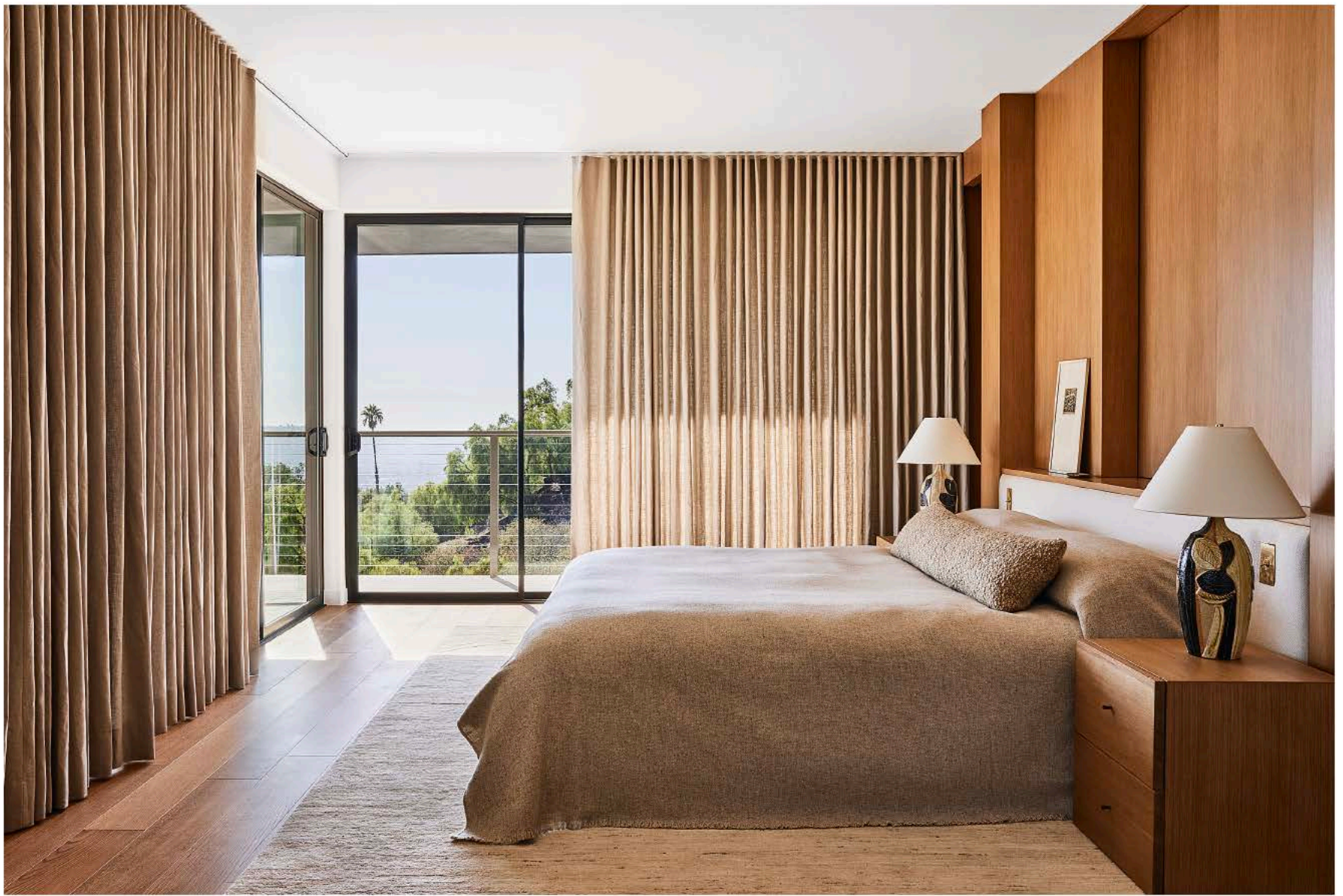


KITCHEN

All the functionalities were hidden to add to the home's tranquil feel.

Tile **splashback**, Pratt + Larson. **Pendant**, Atelier de Troupe. **Bar stools**, Nickey Kehoe. **Vase** by Victoria Morris. **Wood sculpture**, Michael Wilson





MEET THE DESIGNER

Corinne Mathern shares her style inspiration

BIGGEST SUCCESS The primary suite was a feat. The oak structure that separated the bedroom from the bathroom was complicated since it housed electrics, plumbing and four pocket doors, all of which had to have access panels. Ultimately, we achieved the intersection of fashion and function and I think it's the most beautiful space in the house.

GREATEST INDULGENCE Our client loves natural stone, so we designed an Indian Buff limestone sink for the guest bathroom and had the fireplace hearth chiselled out of the same stone.

DESIGN HERO Rick Owens.

FAVOURITE BUILDING The Von Romberg House by Lulah Maria Riggs (1938).

SECRET ADDRESS

Butterfly Beach when it's low tide.

MAIN BEDROOM

When closed, the curtains look like an architectural feature.

White oak **panelling** and **nightstands**, made by Allen Construction.

Headboard in Holly Hunt fabric. Lumbar **pillow** in Zak + Fox bouclé.

Coverlet, Teixidors at Galerie Provenance.

Ceramic **lamps**, Noomi

Backhausen at Ponce

Berga. Area **rug**, Armadillo

MAIN BATHROOM

The panelling and pocket doors feature the same white oak as the adjoining main bedroom, creating a smooth transition between the spaces.

White oak **stool** by Guillaume Sasseville at Garde. Floor **tiles**, Exquisite Surfaces.

Polished nickel

brassware, Waterworks

